

Protect the sea turtles of Koroni

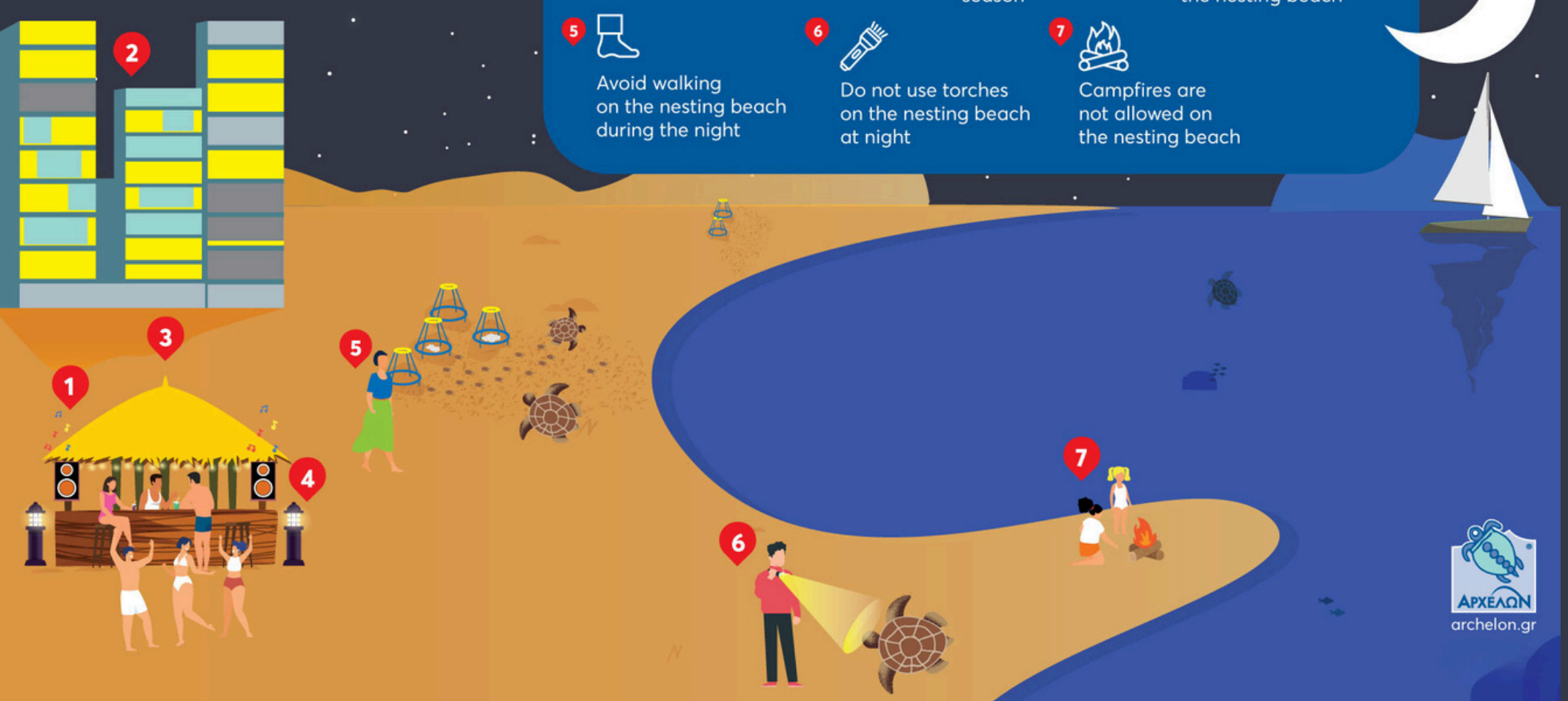
Draw your curtains, turn off the balcony lights: leave the beaches dark for the turtles at night!

Leaving the water, the female sea turtle crawls up the beach to find a suitable nesting spot. Females will return to the sea without laying eggs if lights or noise on the beach disturbs them. If after repetitive efforts their nesting is disturbed, the females will lay their eggs in the water and those eggs will never hatch...

Seven to ten weeks after successful nesting, hatchlings break out of the eggs and struggle towards the surface. They wait just below the surface until the sand has cooled at night or in the early morning. Then, they emerge en masse and race toward the sea. They are photo-tactic, meaning they will follow the light to find their way to the sea. At an undisturbed beach, the reflected starlight guides them to the water. However, if light pollution is prominent on the back of the beach, the baby hatchlings will get disoriented and lose their way...

How to help sea turtles At night-time

- Avoid making any noise near the nesting beach
- Draw the curtains at nightfall
- Beach parties are not allowed during the nesting season
- Switch off or cover bright lights that are visible from the nesting beach
- Avoid walking on the nesting beach during the night
- Do not use torches on the nesting beach at night
- Campfires are not allowed on the nesting beach



Protect the sea turtles of Koroni

Take a Sea Turtle Beach Walk with our volunteers!

Get a close look at the nesting beach and learn about sea turtles during a 30-min walk with an ARCHELON volunteer. This walk is part of ARCHELON's multi-sectoral environmental awareness program and aims to integrate environmental interpretation as a conservation tool to raise awareness about the nesting beaches, the sand dunes and proper human - sea turtle interactions. [BOOK YOUR PLACE HERE](#)



How to help sea turtles At day-time

- Motorized vehicles are not permitted on the nesting beach
- Prevent water from showers or any other sources from leaking onto the nests
- Do not move the protective cages
- Remove beach furniture before nightfall
- Remember to knock down any sand sculptures before leaving the beach
- Do not touch the hatchlings. Instead, shade them and flatten the sand to create a path for them
- Do not rake the sand

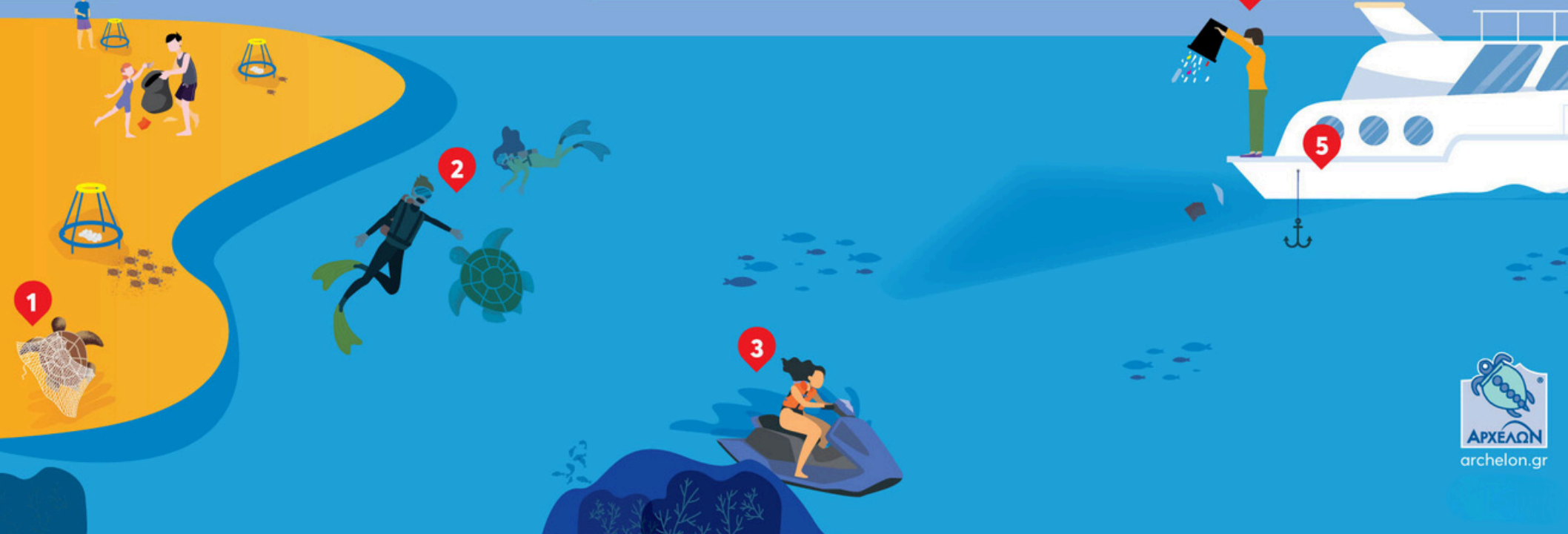


Protect the sea turtles of Koroni

Sea turtles are not pets: Do not touch or feed them!

How to help sea turtles At the sea

- In the unfortunate event of an injured or a dead sea turtle call +30 6941 511 511
- Do not touch or swim with sea turtles
- Maintain a slow speed when approaching or leaving the area close to the nesting beach
- Please do not litter
- Do not drop anchors near the nesting beach



What else you can do:

