

Protect the sea turtles of Rethymno

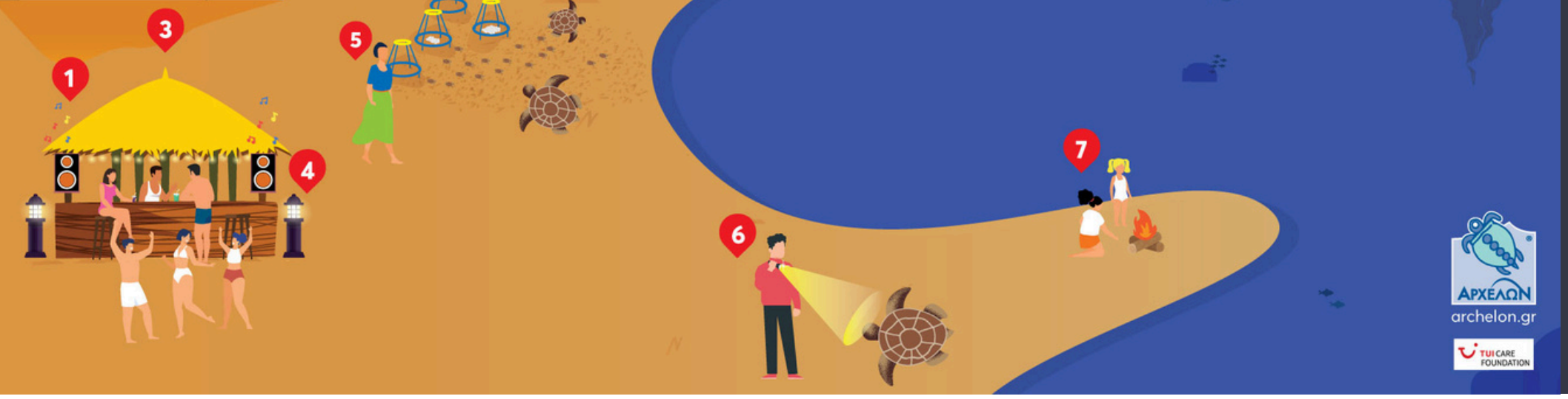
Draw your curtains, turn off the balcony lights: leave the beaches dark for the turtles at night!

Leaving the water, the female sea turtle crawls up the beach to find a suitable nesting spot. Females will return to the sea without laying eggs if lights or noise on the beach disturbs them. If after repetitive efforts their nesting is disturbed, the females will lay their eggs in the water and those eggs will never hatch...

Seven to ten weeks after successful nesting, hatchlings break out of the eggs and struggle towards the surface. They wait just below the surface until the sand has cooled at night or in the early morning. Then, they emerge en masse and race toward the sea. They are photo-tactic, meaning they will follow the light to find their way to the sea. At an undisturbed beach, the reflected starlight guides them to the water. However, if light pollution is prominent on the back of the beach, the baby hatchlings will get disoriented and lose their way...

How to help sea turtles At night-time

- 1 Avoid making any noise near the nesting beach
- 2 Draw the curtains at nightfall
- 3 Beach parties are not allowed during the nesting season
- 4 Switch off or cover bright lights that are visible from the nesting beach
- 5 Avoid walking on the nesting beach during the night
- 6 Do not use torches on the nesting beach at night
- 7 Campfires are not allowed on the nesting beach



Protect the sea turtles of Rethymno

Take a Sea Turtle Beach Walk with our volunteers!

Get a close look at the nesting beach and learn about sea turtles during a 30-min walk with an ARCHELON volunteer. This walk is part of ARCHELON's multi-sectoral environmental awareness program and aims to integrate environmental interpretation as a conservation tool to raise awareness about the nesting beaches, the sand dunes and proper human - sea turtle interactions. [BOOK YOUR PLACE HERE](#)



How to help sea turtles At day-time

- 1 Motorized vehicles are not permitted on the nesting beach
- 2 Prevent water from showers or any other sources from leaking onto the nests
- 3 Do not move the protective cages
- 4 Remove beach furniture before nightfall
- 5 Remember to knock down any sand sculptures before leaving the beach
- 6 Do not touch the hatchlings. Instead, shade them and flatten the sand to create a path for them
- 7 Do not rake the sand

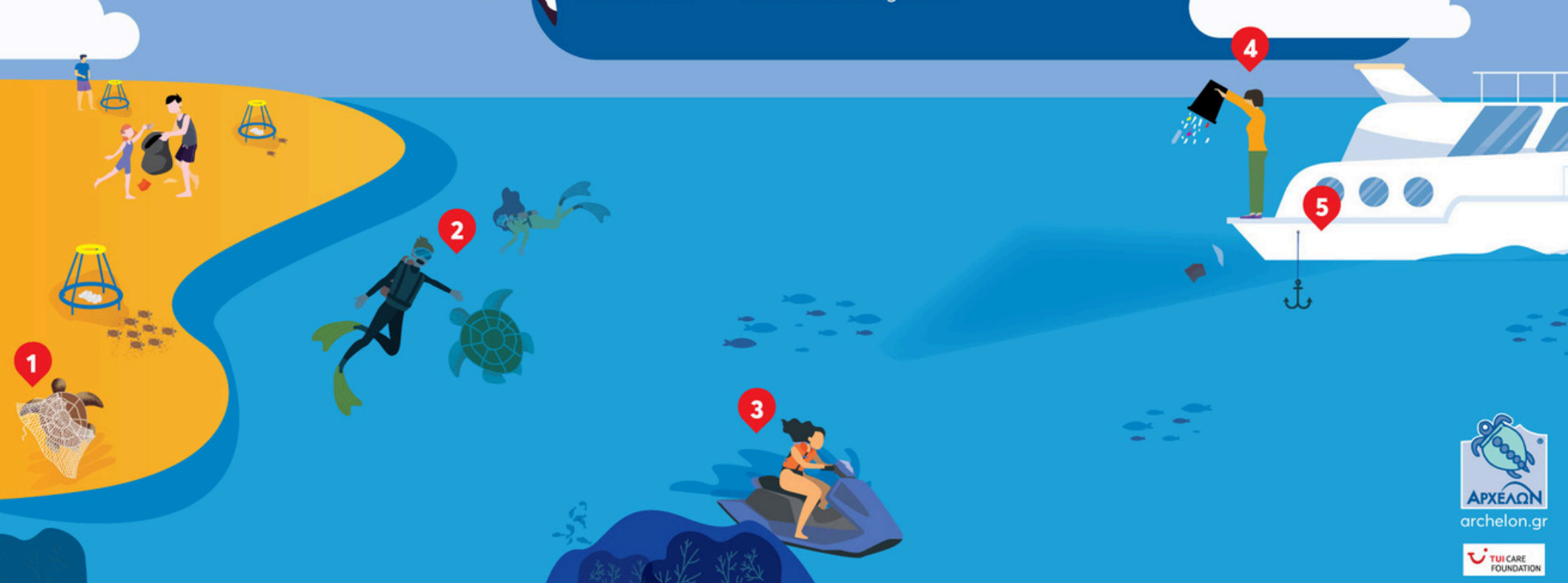


Protect the sea turtles of Rethymno

Sea turtles are not pets: Do not touch or feed them!

How to help sea turtles At the sea

- 1 In the unfortunate event of an injured or a dead sea turtle call +30 6941 511 511
- 2 Do not touch or swim with sea turtles
- 3 Maintain a slow speed when approaching or leaving the area close to the nesting beach
- 4 Please do not litter
- 5 Do not drop anchors near the nesting beach



TUI Turtle Aid Greece

Starting from the summer of 2023, ARCHELON implements the three year project "TUI Turtle Aid Greece" by TUI Care Foundation and ARCHELON, which includes, amongst other actions, an innovative component: the pilot implementation of a Turtle-Friendly Certification by engaging the hospitality and tourism sector. It encourages sustainable development in tourism, offers guidelines for businesses committed to turtle conservation, and helps tourists make eco-friendly choices when selecting hotels and excursions. This certification system is designed collaboratively by the TUI Care Foundation, TUI Turtle-Aid partners, and tourism stakeholders to ensure clear communication and a business-oriented approach.

ARCHELON is undertaking a proactive role in piloting this initiative, with a specific focus on hotels situated on nesting beaches in Rethymno and Chania. In collaboration with ECOCLUB, who are providing the expertise of external sustainable tourism specialists, the project is expected to support and guide the selected hotels through the implementation process. Furthermore, the project is supporting activities such as nest protection on heavily frequented beaches and the enhancement of public awareness campaigns. Additionally, an ARCHELON research team is to conduct a survey of sea turtle nesting activity on the island of Rhodes, contributing to the ongoing Sustainability Lab Initiative on Rhodes, in collaboration with TUI Care Foundation.

What else you can do:

- [Adopt a mother turtle, a baby hatchling or a nest](#)
- [Learn more about sea turtles](#)
- [Follow us on Social Media](#)
- Spread the message!